

Members take lead in Association work

Your Association operates as a representative democracy. Every member has an equal voice, and every member has equal representation within the Association.

Every Nebraska school building has an appointed or elected Association/faculty representative. Those representatives work with members in their building and connect to the elected officers of the district-wide local Association. Each local Association is found in one of the six NSEA governance districts (see map, page 7). Each governance district has a board of directors, and each district is represented on the NSEA Board of Directors, with each board member representing a roughly equal number of members. NSEA board members are chosen in online elections in late winter each year. Any Association member in good standing is encouraged to seek election to either their NSEA district board or the statewide board of directors.

NSEA also elects, to three-year terms, two representatives on the National Education Association Board of Directors. Along with NSEA President Jenni Benson and Vice President Robert Miller, Nebraska NEA Directors Linda Freye and Edward Ventura comprise the Executive Committee of the Board of Directors.

In addition, members from every local association are eligible to seek election to serve as a representative to the NSEA's Delegate Assembly. At that annual April business meeting, more than 300 delegates from across the state elect officers, set the Association's agenda for the coming year, craft the As-



Executive team: NSEA is led by President Jenni Benson (front left), Vice President Robert Miller (front right), and two directors on the National Education Association Board, Edward Ventura (back left) and Linda Freye (back right).

sociation's foundational Resolutions, and review and update the Bylaws, which guide Association operations.

In every effort, members lead and pave the way forward—all on behalf of the children who attend our schools in support of quality public education. For details, email Benson at jenni.benson@nsea.org.



Jenni Benson
President
Lincoln, '23
402-890-3169



Robert Miller
Vice President
Westside, '23
402-515-4882



Edward Ventura Jr.
Omaha
NEA Director, '25
402-210-1655



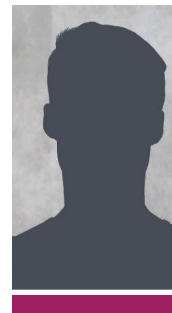
Linda Freye
Lincoln
NEA Director, '23
402-540-3746



Marsha Edquist
Millard
Metro President, '24
402-660-4282



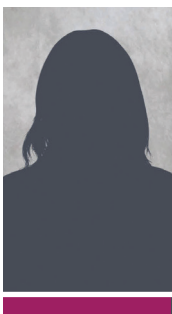
Sasha Cervantes
Omaha
Metro, '23
402-216-3906



Vacant
Metro



Paul Schulte
Millard
Metro, '24
402-516-2018



Vacant
Metro



Dr. Tanishia Jacobs
Bellevue
Metro, '25
402-981-7434



Lisa Hanson
Neligh-Oakdale
Elkhorn Pres. '24
402-640-7465



Kimberly Erickson
Norfolk
Elkhorn, '25
402-750-4399



Vacant
Elkhorn



Vanessa Brand
Oakland-Craig
Elkhorn, '24
402-377-1580



Mary Gregoski
Palmer
Sandhills Pres., '24
308-754-4321



Vacant
Sandhills

District Officers

These members have been elected to lead NSEA at the District level:

■ Metro District

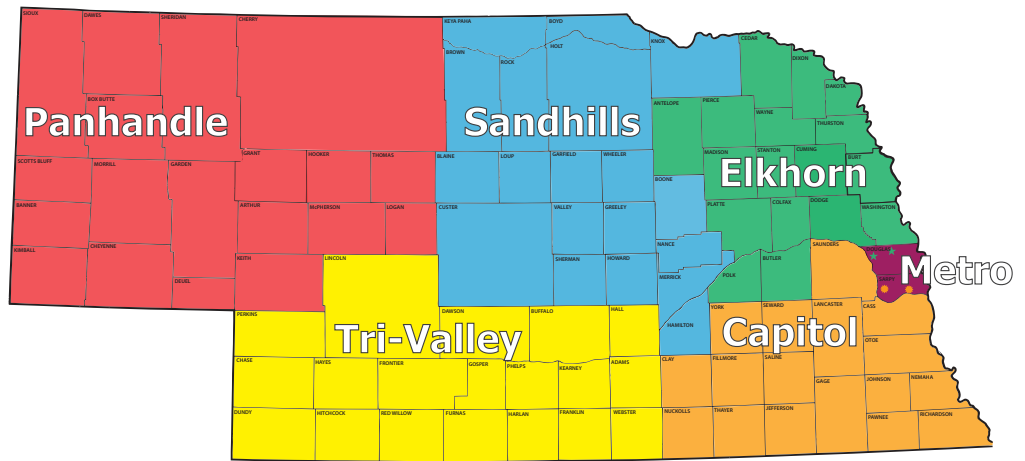
President Marsha Edquist, Millard
 Vice Pres..... Stacie Stevens, Omaha
 Treasurer Carrie Pratt, Omaha
 Secretary Julie Adams, Bellevue
 Exec Comm..... Faith Johnson, Omaha
 Lee Perez, Omaha
 Diana Casey, Omaha
 Chris Janovec-Poehlman, Millard
 Stacy Johnson, Millard
 Andrew Bowen, Bellevue
 Judith Stucky, Westside
 Rosey Krauel, DC West
 Gail Sherrell, Papillion La Vista
 One vacancy

■ Elkhorn District

President Lisa Hanson, Neligh-Oakdale
 Vice Pres..... Kristi Rastede, Northeast CC
 Treasurer Vacancy
 Secretary Pamela Anderson, Hartington
 Exec Comm..... Amanda Dennis, Arlington
 Matt McCarthy, Northeast CC
 Michele Brand, South Sioux
 Carrie Sheppard, Battle Creek
 Two vacancies

■ Sandhills District

President Mary Gregoski, Palmer
 Vice Pres..... Whitney Hake, Palmer
 Treasurer Vacancy
 Secretary Becky Meyer, Palmer



In order to comply with NEA guidelines, the ● Greta Education Association and ● Springfield/Platteview Education Association will be included in Capitol District.
 ★ Metro Community College Education Association and ★ Bennington Education Association are included in Elkhorn District.

Exec Comm..... Lynette Svenson, Callaway
 Dee Ann Roy, Arcadia
 Mandy Evans, Ainsworth
 One vacancy

■ Capitol District

President Burke Brown, Dist. OR-1
 Vice Pres..... Jen Yoder, Lincoln
 Treasurer Nora Lenz, Lincoln
 Secretary Megan Pitrat, Lincoln
 Exec Comm..... Jake Jolliffe, Lincoln
 Gina Bolz, Lincoln
 Julie Colby, Lincoln
 One vacancy

■ Tri-Valley District

President Ben Welsch, Hastings
 Vice Pres..... Jade Bartunek, Hastings

Treasurer..... Angie Dickey, Chase County
 Secretary..... Holly Ortega, Grand Island
 Exec Comm..... Becky Mousel, Minden
 Abby Hansen, Lexington
 Judy Henning, UNK
 Janet Sheaffer, Chase County
 Robin Henrichs, McCook
 One vacancy

■ Panhandle District

President Renae Noble, Chadron
 Vice Pres..... Dash Rohan, Sioux County
 Treasurer Matt Chrisman, Mitchell
 Secretary Shannon Kinsella, Alliance
 Exec Comm..... Amanda Reilly, Bayard
 Kathleen Woods, Chadron
 Jessica Foland, Scottsbluff
 Three vacancies



Ben Welsch
 Hastings
 Tri-Valley Pres., '24
 402-826-9687



Stacie Blackmore
 Kearney
 Tri-Valley, '24
 308-325-7324



Melissa Boutwell
 Lexington
 Tri-Valley, '23
 308-991-0509



Elena Garcia
 Grand Island
 Tri-Valley, '25
 308-765-1096



Renae Noble
 Chadron
 Panhandle Pres., '23
 308-430-1904



Bryan Regier
 Stapleton
 Panhandle, '25
 308-458-7907



Burke Brown
 Palmyra Dist OR-1
 Capitol Pres., '25
 402-432-1081



Mindy Diller
 Lincoln
 Capitol, '23
 402-217-2333



Deb Rasmussen
 Lincoln
 Capitol, '25
 402-202-6268



Robin Anstrom
 Falls City
 Capitol, '25
 402-245-5340



Megan Simsic
 Lincoln
 Capitol, '24
 402-314-7363



De Tonack
 Lincoln
 NSEA-R Pres., '23
 402-525-4264



Kristi Rastede
 Northeast CC
 Higher Ed, '24
 605-670-1045



Nora Lenz
 Lincoln
 EMAC, '24
 402-467-2983



Stephanie Wright
 Doane University
 Aspiring Ed Pres. '23
 402-741-2732



Jenny Wood
 South Sioux City
 ESP, '25
 712-294-4273